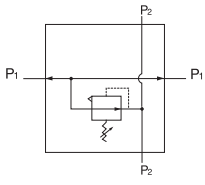


# Common-P1 Regulator R09

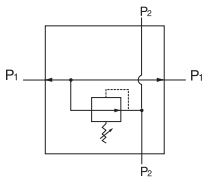
= "Most Popular"

**B**

Filters, Regulators, Lubricators



Relieving



Non-Relieving



**R09-02-FB00**

## Features

- Balanced Valve Design
- 2 Regulated Ports
- Ease of Maintenance of Serviceability
- Light Weight
- Modern Design and Appearance

## Specifications

|                               |               |  |
|-------------------------------|---------------|--|
| Flow Capacity*                | 1/8           | 27.0 SCFM (12.7 dm <sup>3</sup> /s)  |
|                               | 1/4           | 28.5 SCFM (13.4 dm <sup>3</sup> /s)  |
| Adjusting Range Pressure      |               | 0 to 30 PSIG (0 to 2.1 bar)<br>0 to 60 PSIG (0 to 4.1 bar)<br>0 to 125 PSIG (0 to 8.6 bar) |
| Maximum Supply Pressure       |               | 300 PSIG (20.7 bar)  |
| Operating Temperature         |               | -4° to 150°F (-20° to 65.5°C)  |
| P1 Port Size (Inlet / Outlet) | NPT / BSPP-G  | 1/8, 1/4   |
| P2 Regulated Ports (2 ea.)    | NPT / BSPT-Rc | 1/8  |
| Weight                        | lb. (kg)      | .66 (0.3)  |

\* Inlet pressure 100 PSIG (6.9 bar). Secondary pressure 90 PSIG (6.2 bar).

## Materials of Construction

|                    |                        |
|--------------------|------------------------|
| Adjustment Knob    | Acetal                 |
| Body               | Zinc                   |
| Body Cap           | ABS                    |
| Bonnet             | 33% Glass-filled PBT   |
| Bottom Plug        | 33% Glass-filled Nylon |
| Diaphragm Assembly | Brass / Nitrile        |
| Valve Assembly     | Brass / Nitrile        |

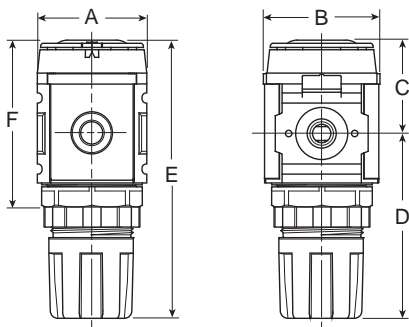
### **WARNING**

**Product rupture can cause serious injury.  
Do not connect regulator to bottled gas.  
Do not exceed maximum primary pressure rating.**

## CAUTION:

**REGULATOR PRESSURE ADJUSTMENT** – The working range of knob adjustment is designed to permit outlet pressures within their full range. Pressure adjustment beyond this range is also possible because the knob is not a limiting device. This is a common characteristic of most industrial regulators, and limiting devices may be obtained only by special design.

For best performance, regulated pressure should always be set by increasing the pressure up to the desired setting.



**NOTE:** 1.25" Dia. (31.8 mm) hole required for panel nut mounting.

## Dimensions

| Models                                 | Inches (mm) | A            | B            | C            | D            | E             | F            |
|--|-------------|--------------|--------------|--------------|--------------|---------------|--------------|
| Standard Common-P1 Unit<br>R09-XX-FB00 |             | 1.58<br>(40) | 1.58<br>(40) | 1.34<br>(34) | 2.60<br>(66) | 3.94<br>(100) | 2.40<br>(61) |

= "Most Popular"

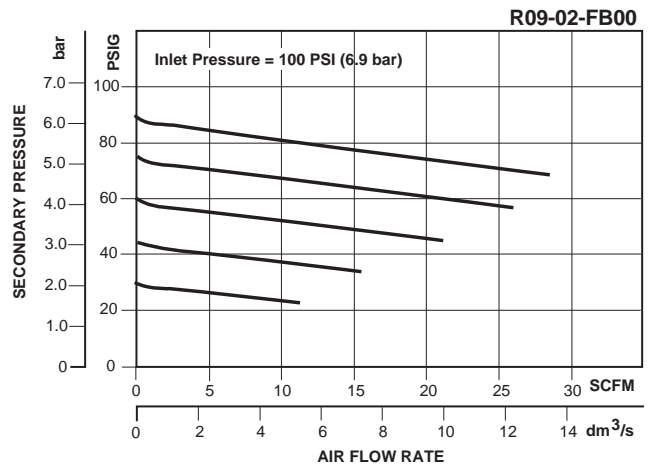
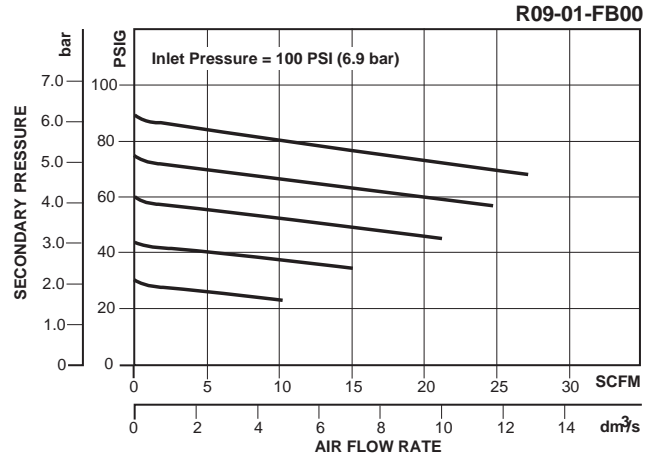
### Replacement Kits

- Diaphragm Assembly –
  - Non-relieving ..... GRP-96-726
  - Relieving..... GRP-96-725
- Spring, Regulating –
  - 0 to 30 PSIG (0 to 2.1 bar) ..... GRP-95-111
  - 0 to 60 PSIG (0 to 4.1 bar) ..... GRP-96-718
  - 0 to 125 PSIG (0 to 8.6 bar) ..... GRP-96-717
- Valve Assembly.....RRP-96-727
- Valve Spring.....RRP-96-728

### Accessories

- Gauge, Pressure –
  - 0 to 60 PSIG (0 to 4.1 bar),  
1.25" Dial Face, 1/8" NPT, CBM ..... K4513N18060
  - 0 to 160 PSIG (0 to 11.0 bar),  
1.25" Dial Face, 1/8" NPT, CBM ..... K4513N18160
- Panel Mount Nut –
  - Aluminum..... RPA-96-733
  - Plastic..... RPA-96-734
- Tamper Resistant Kit..... RPA-96-735
- Wall Mounting Bracket –
  - C-Type ..... GPA-97-010
  - L-Type ..... GRP-96-739
  - T-Type ..... GPA-96-737

**NOTE:** Gauge not included, order separately by accessory number.



Typical Application

### Ordering Information

All P2 Regulated Ports are 1/8"

| Model Type    | P1 Port Size | Without Gauge<br>0 to 125 PSIG<br>0 to 8.6 bar) | Without Gauge<br>0 to 30 PSIG<br>(0 to 2.1 bar) | Without Gauge<br>0 to 60 PSIG<br>(0 to 4.1 bar) |
|---------------|--------------|---|---|---|
| Relieving     | 1/8          | R09-01-FB00                                     | R09-01-CB00                                     | R09-01-DB00                                     |
|               | 1/4          | R09-02-FB00                                     | R09-02-CB00                                     | R09-02-DB00                                     |
| Non-relieving | 1/8          | R09-01-RB00                                     | R09-01-PB00                                     | R09-01-WB00                                     |
|               | 1/4          | R09-02-RB00                                     | R09-02-PB00                                     | R09-02-WB00                                     |

**Options** - To order an option supplied with the unit model, add the appropriate coded suffix letter in the designated position of the model number.